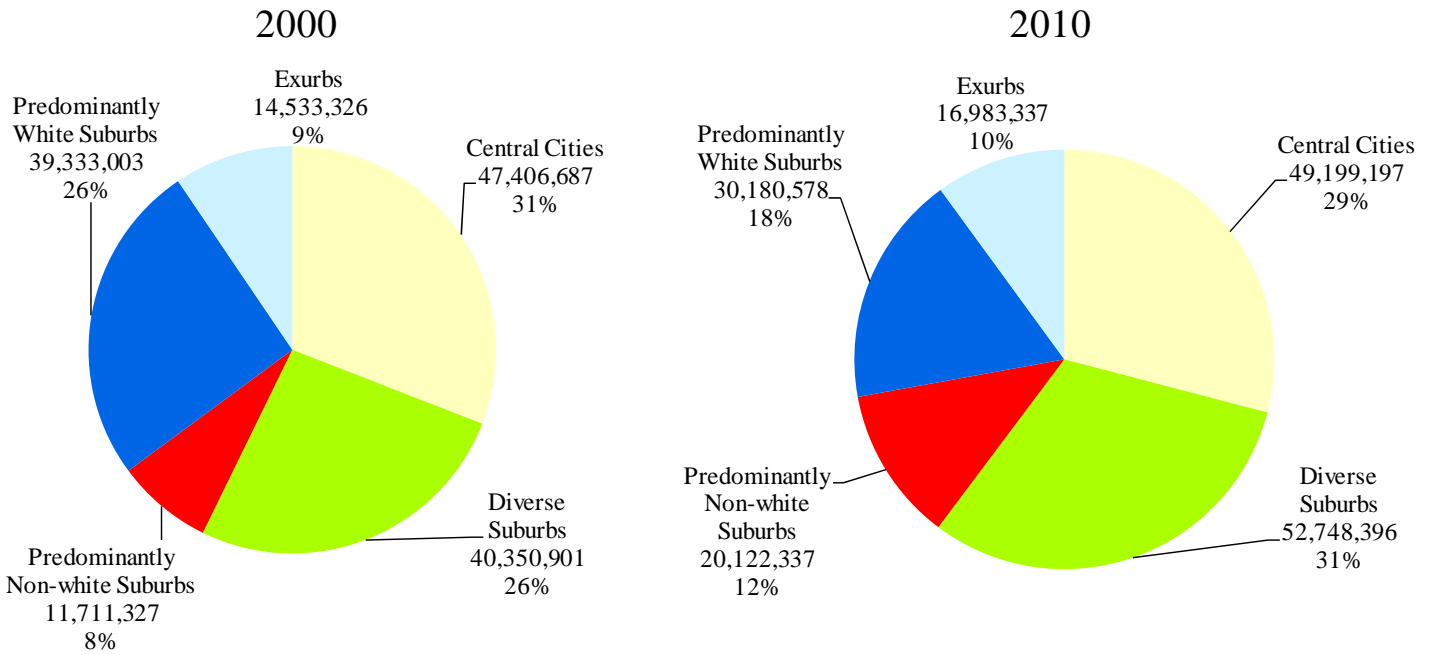


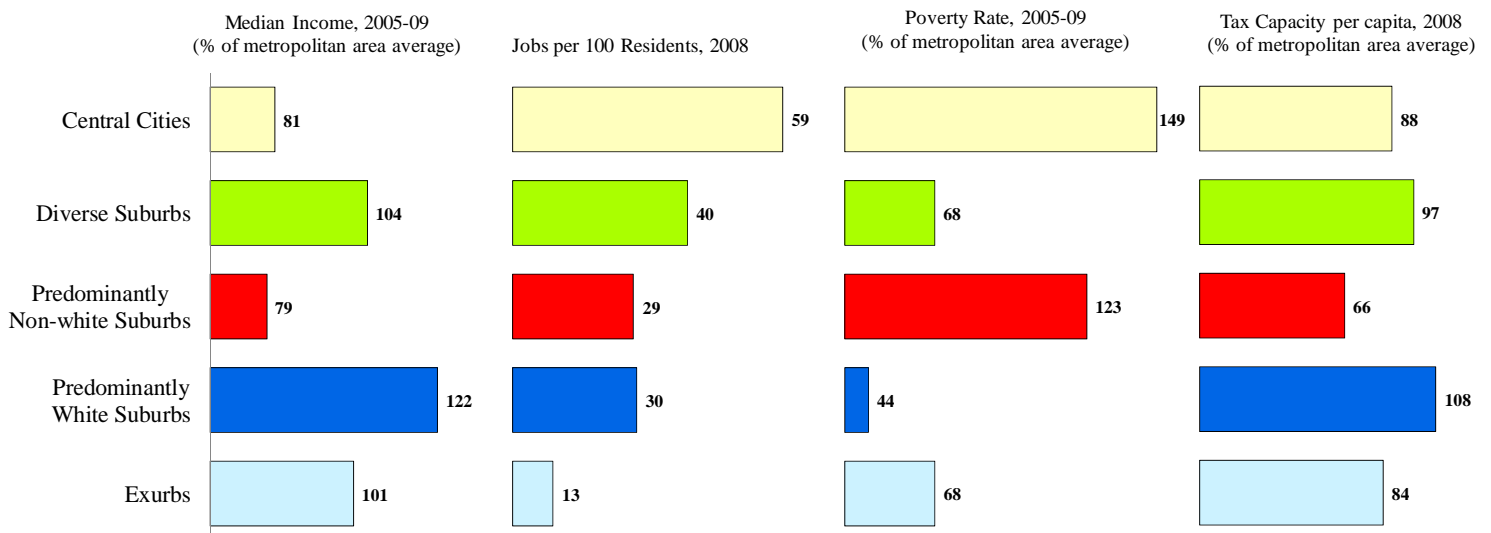
America's Racially Diverse Suburbs: Opportunities and Challenges

50 Largest U.S. Metropolitan Areas

Community types in the 50 largest metropolitan areas



Characteristics of the Community Types in the 50 largest metropolitan areas

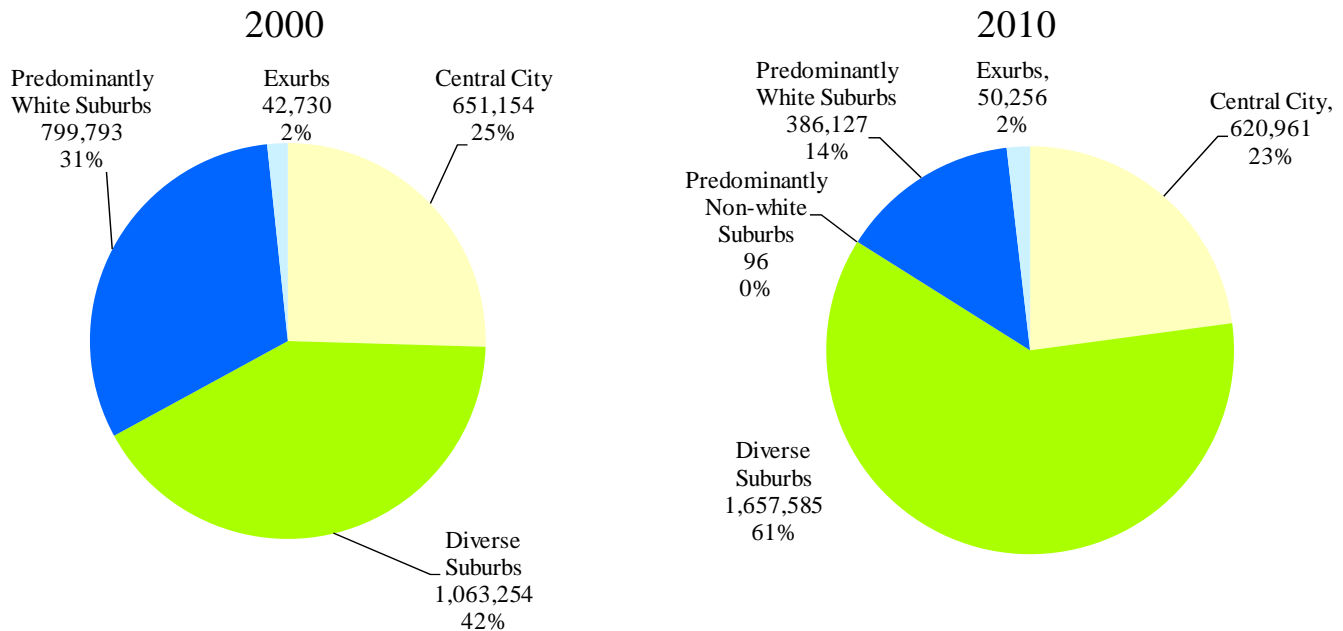


Data Sources: Population, income and poverty—Census Bureau; Jobs—Local Employer-Household Dynamics Program; Tax base—various state and local government sources.

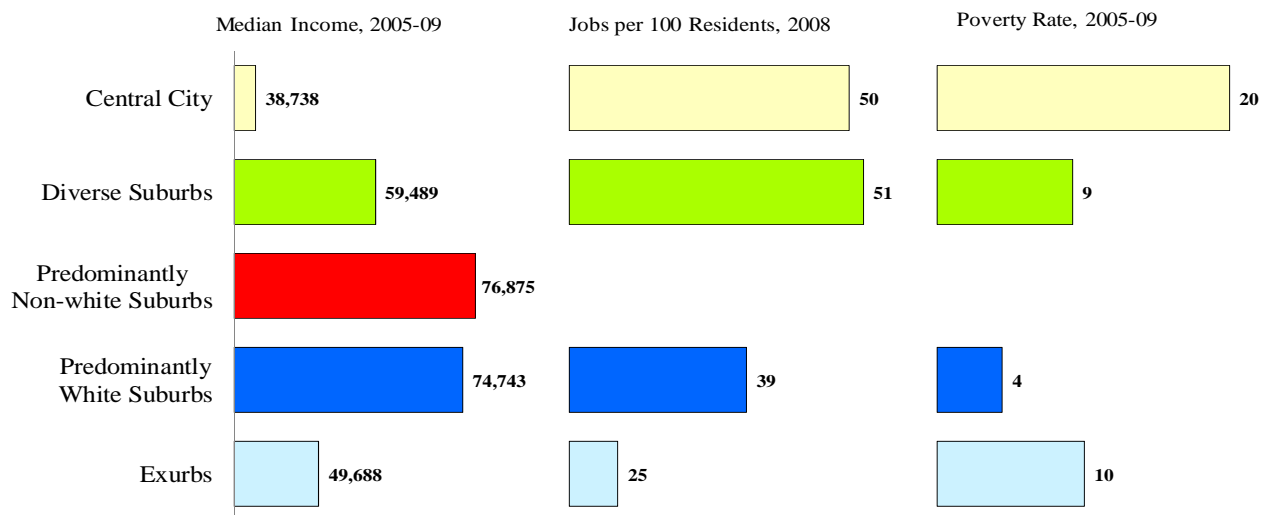
America's Racially Diverse Suburbs: Opportunities and Challenges

Baltimore Metropolitan Area

Community Types in Baltimore



Characteristics of the Community Types in Baltimore



Data Sources: Population, income and poverty—Census Bureau; Jobs—Local Employer-Household Dynamics Program.

Baltimore Metropolitan Area: Fact Sheet

Breakdown of Community Type

	2010 <u>Population</u>	Share of Metro <u>Population</u>	Share of Suburban <u>Population</u>
Diverse	1,657,585	61	79
Predominantly non-white	96	0	0
Predominantly white	386,127	14	18
Exurb	50,256	2	2
Central City	620,961	23	

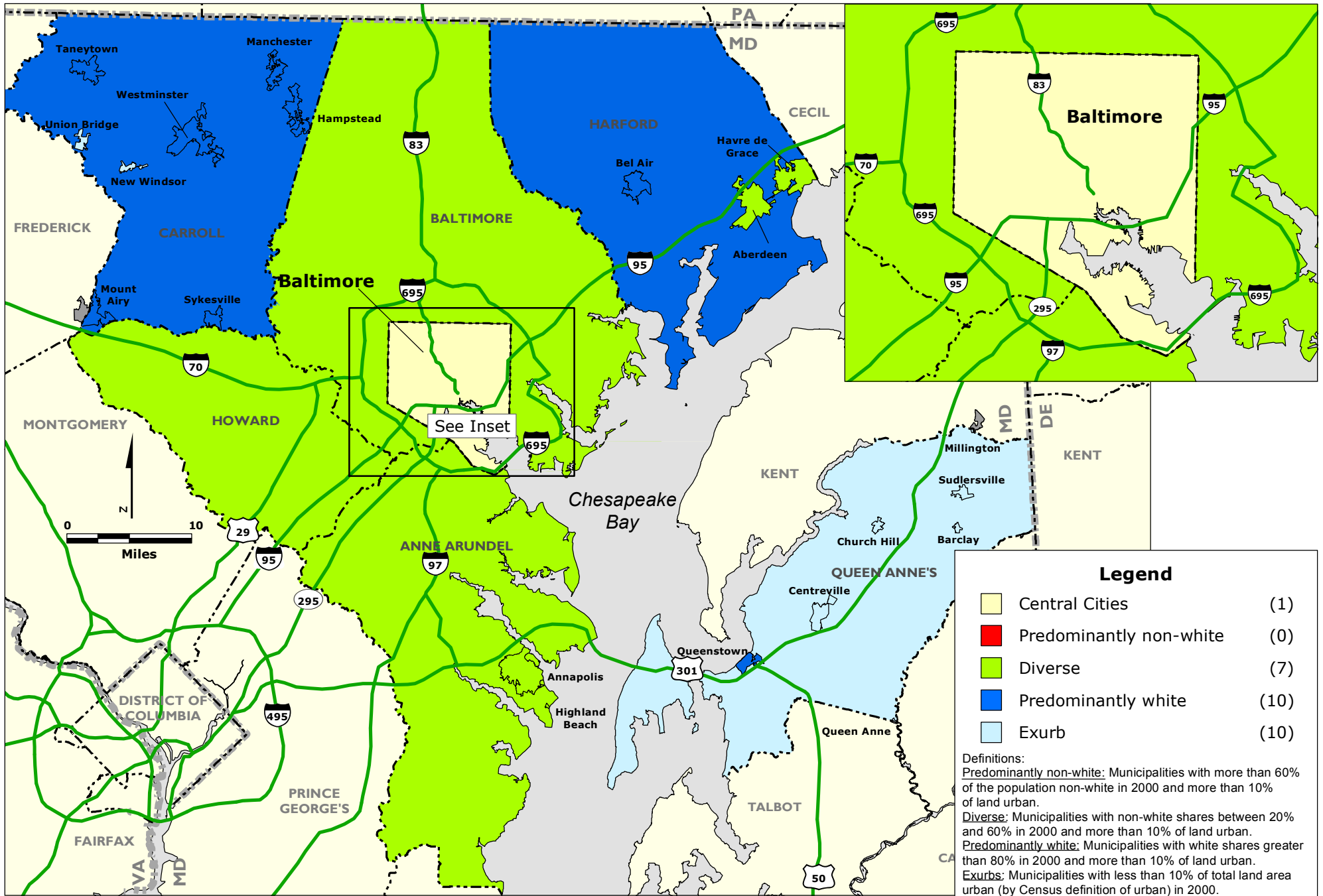
Examples of Large Diverse Suburbs

	2000 <u>Population</u>	2010 <u>Population</u>	2010 % of Population <u>Non-white</u>
Unincorporated Baltimore County	754,292	805,029	37
Unincorporated Anne Arundel County	453,709	499,166	26
Howard County	247,842	287,085	41
Annapolis city	35,838	38,394	47
Aberdeen city	13,842	14,959	44
Havre de Grace city	11,331	12,952	27

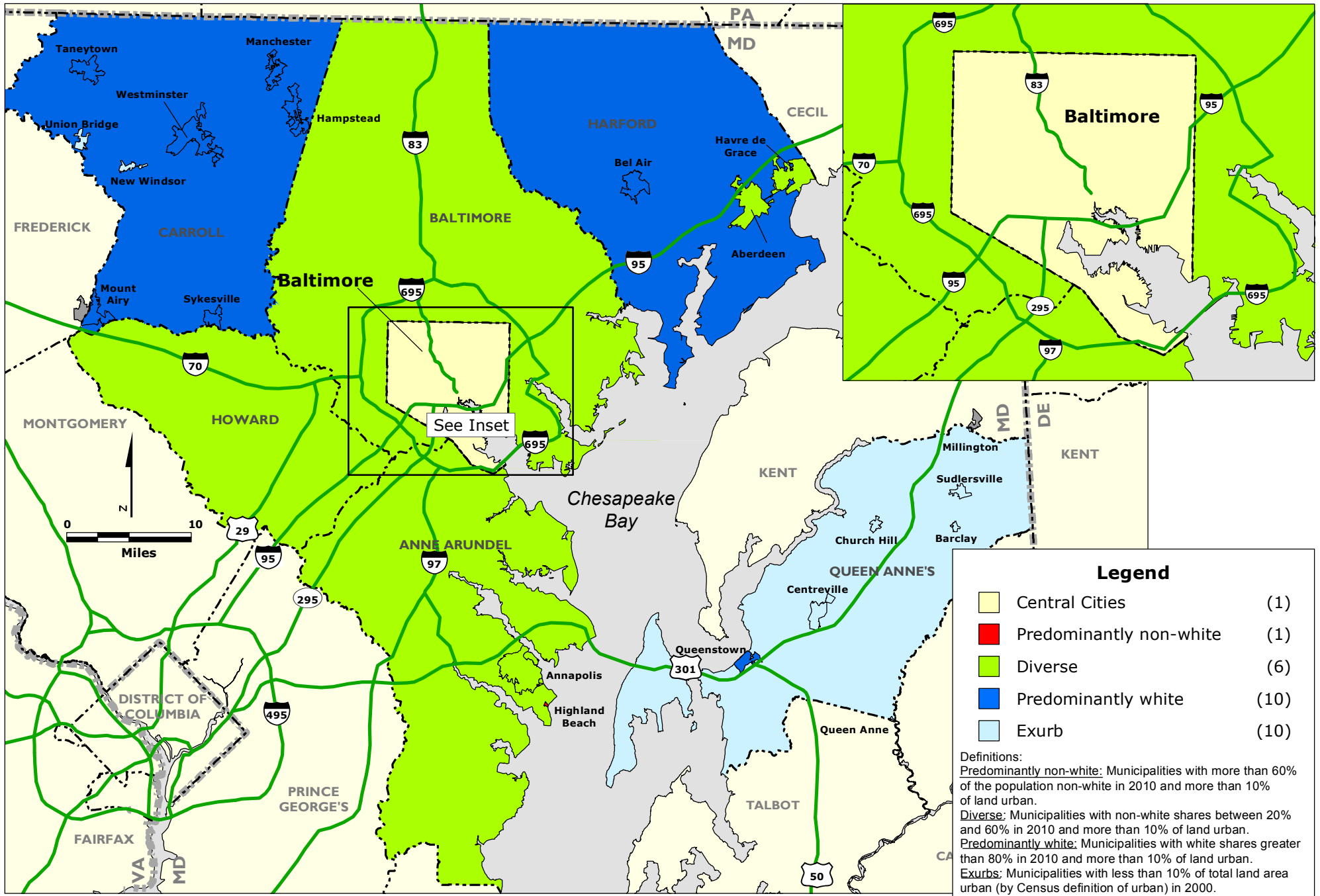
Examples of Suburbs in Rapid Transition

	2000 % of Population <u>Non-white</u>	2010 % of Population <u>Non-white</u>	% Point <u>Change</u>
Howard County	27	41	14
Unincorporated Baltimore County	27	37	10
Sykesville town	9	19	10
Aberdeen city	36	44	8
Westminster city	10	18	8
Unincorporated Anne Arundel County	19	26	7
Unincorporated Harford County	12	19	7
Manchester town	3	10	7
Annapolis city	41	47	6






BALTIMORE REGION: Community Type by Municipality and County Unincorporated Area, 2000



BALTIMORE REGION: Community Type by Municipality and County Unincorporated Area, 2010



Legend

	Central Cities	(1)
	Predominantly non-white	(1)
	Diverse	(6)
	Predominantly white	(10)
	Exurb	(10)

Definitions:
Predominantly non-white: Municipalities with more than 60% of the population non-white in 2010 and more than 10% of land urban.
Diverse: Municipalities with non-white shares between 20% and 60% in 2010 and more than 10% of land urban.
Predominantly white: Municipalities with white shares greater than 80% in 2010 and more than 10% of land urban.
Exurbs: Municipalities with less than 10% of total land area urban (by Census definition of urban) in 2000.