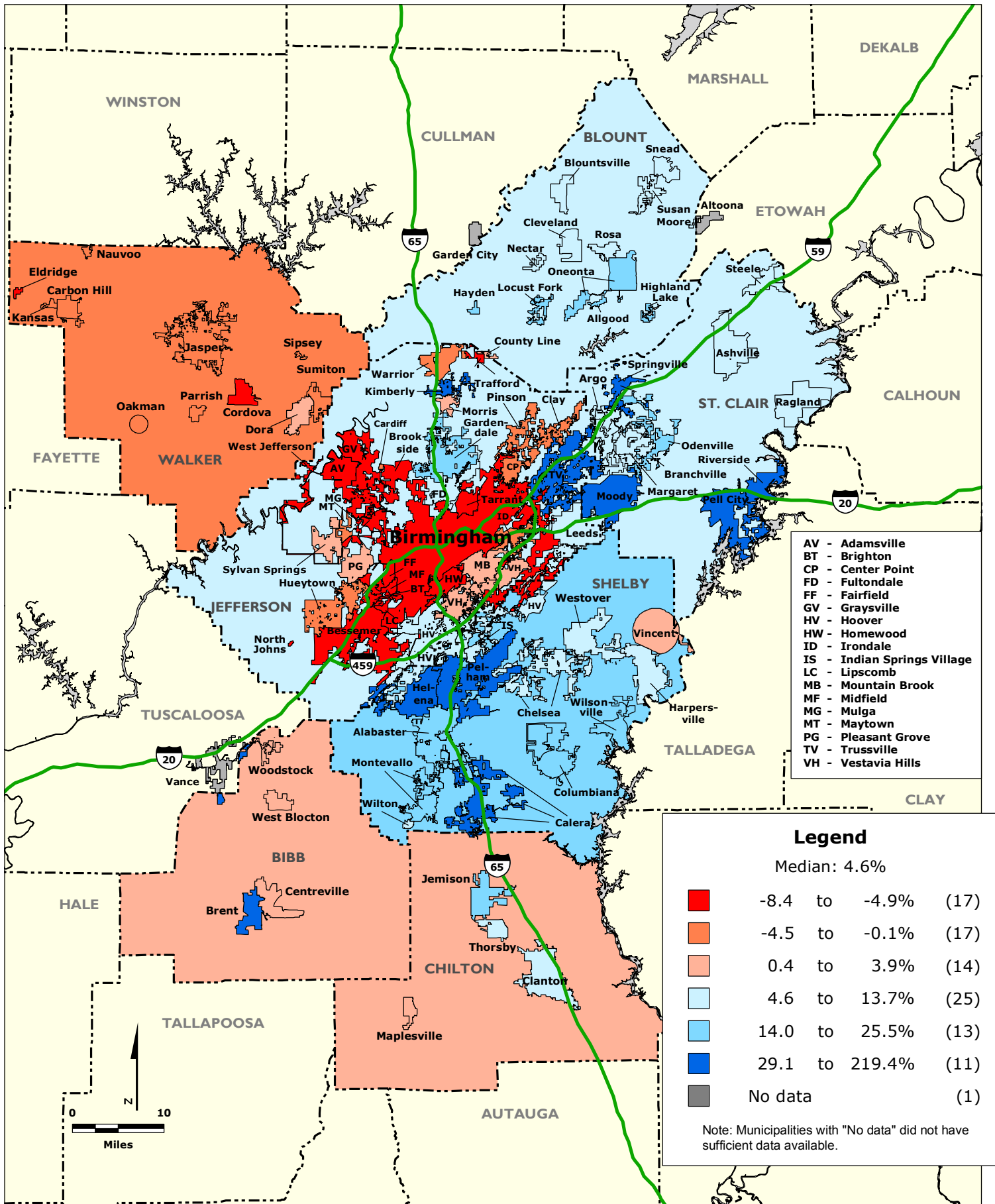


BIRMINGHAM REGION: Percentage Change in Population by Municipality and County Unincorporated Area, 2000-2008



- AV - Adamsville
- BT - Brighton
- CP - Center Point
- FD - Fultondale
- FF - Fairfield
- GV - Graysville
- HV - Hoover
- HW - Homewood
- ID - Irondale
- IS - Indian Springs Village
- LC - Lipscomb
- MB - Mountain Brook
- MF - Midfield
- MG - Mulga
- MT - Maytown
- PG - Pleasant Grove
- TV - Trussville
- VH - Vestavia Hills

Legend

Median: 4.6%

■	-8.4 to -4.9%	(17)
■	-4.5 to -0.1%	(17)
■	0.4 to 3.9%	(14)
■	4.6 to 13.7%	(25)
■	14.0 to 25.5%	(13)
■	29.1 to 219.4%	(11)
■	No data	(1)

Note: Municipalities with "No data" did not have sufficient data available.

Data Source: U.S. Census Bureau.