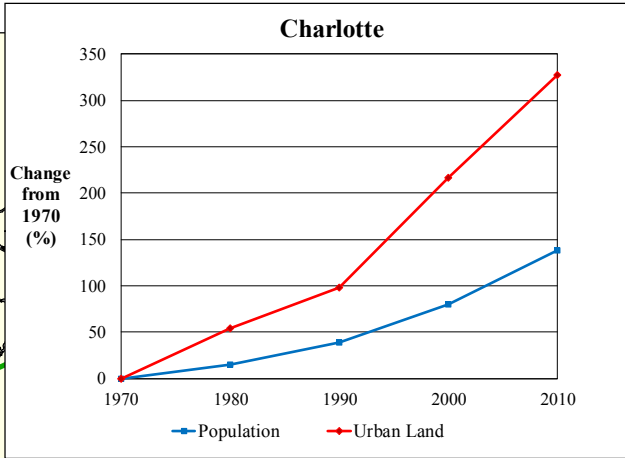
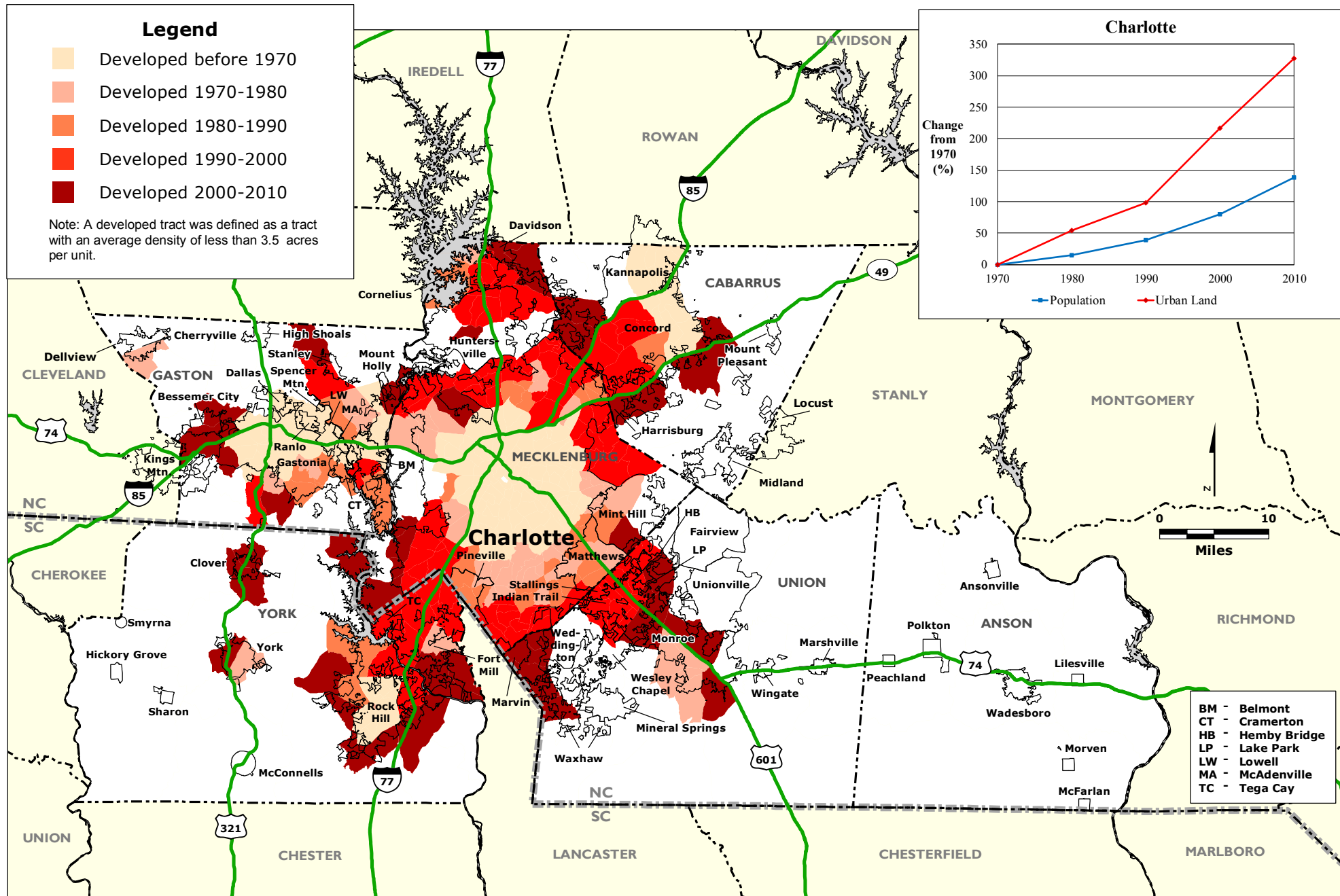


CHARLOTTE REGION: Urban Land by Census Tract, 1970 to 2010

Legend

- Developed before 1970
- Developed 1970-1980
- Developed 1980-1990
- Developed 1990-2000
- Developed 2000-2010

Note: A developed tract was defined as a tract with an average density of less than 3.5 acres per unit.



BM - Belmont
 CT - Cramerton
 HB - Hemby Bridge
 LP - Lake Park
 LW - Lowell
 MA - McAdenville
 TC - Tega Cay