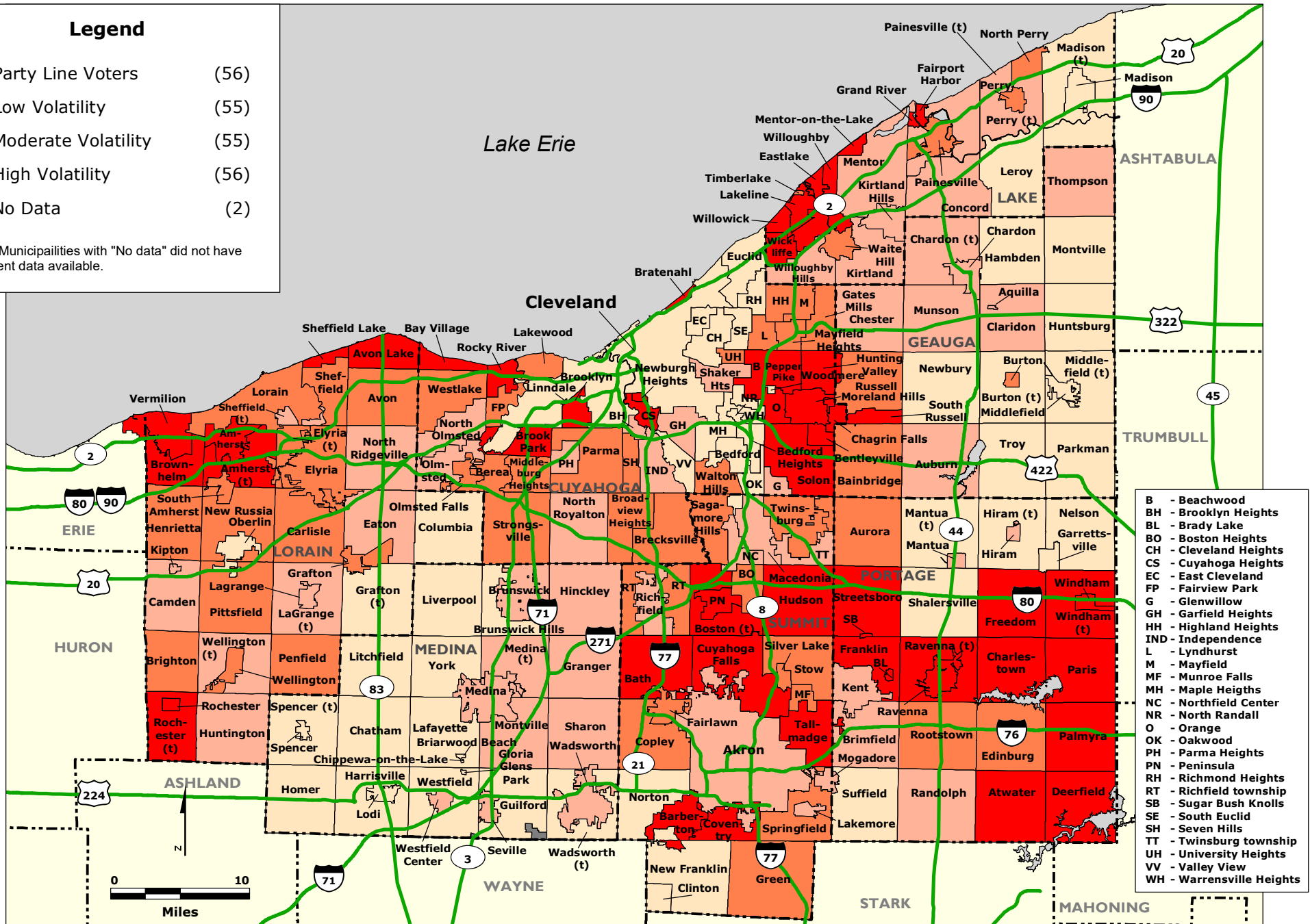


CLEVELAND - AKRON REGION: Voter Volatility by Municipalities based on Election Results for the year 2016

Legend

- Party Line Voters (56)
- Low Volatility (55)
- Moderate Volatility (55)
- High Volatility (56)
- No Data (2)

Note: Municipalities with "No data" did not have sufficient data available.



- B - Beachwood
- BH - Brooklyn Heights
- BL - Brady Lake
- BO - Boston Heights
- CH - Cleveland Heights
- CS - Cuyahoga Heights
- EC - East Cleveland
- FP - Fairview Park
- G - Glenwillow
- GH - Garfield Heights
- HH - Highland Heights
- IND - Independence
- L - Lyndhurst
- M - Mayfield
- MF - Munroe Falls
- MH - Maple Heights
- NC - Northfield Center
- NR - North Randall
- O - Orange
- OK - Oakwood
- PH - Parma Heights
- PN - Peninsula
- RH - Richmond Heights
- RT - Richfield township
- SB - Sugar Bush Knolls
- SE - South Euclid
- SH - Seven Hills
- TT - Twinsburg township
- UH - University Heights
- VV - Valley View
- WH - Warrensville Heights

Data Sources: Ohio Secretary of State, Various Ohio County Board of Elections.