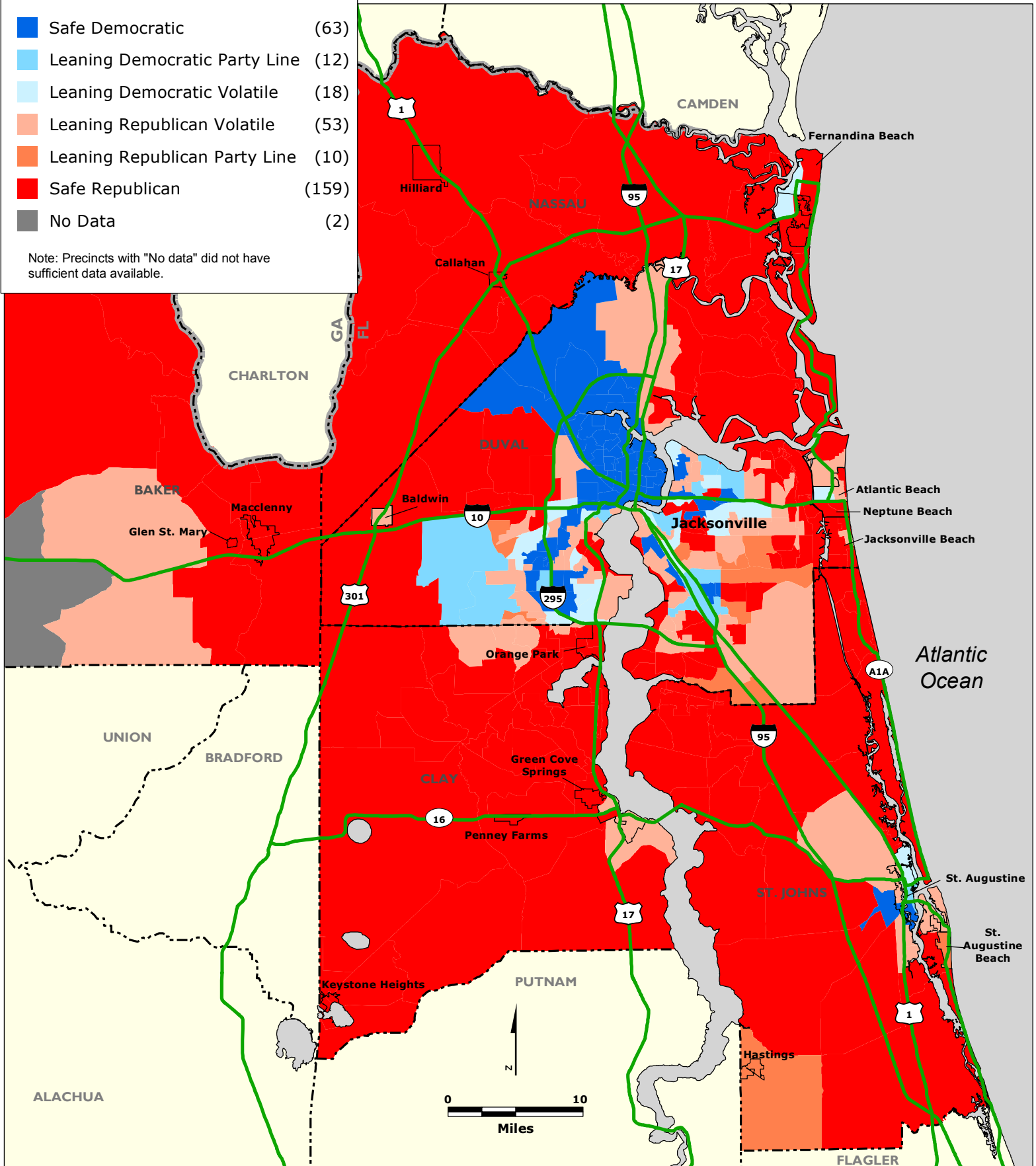


# JACKSONVILLE REGION: Party Preferences by Voting Precincts based on Election Results for the year 2012

## Legend

	Safe Democratic	(63)
	Leaning Democratic Party Line	(12)
	Leaning Democratic Volatile	(18)
	Leaning Republican Volatile	(53)
	Leaning Republican Party Line	(10)
	Safe Republican	(159)
	No Data	(2)

Note: Precincts with "No data" did not have sufficient data available.



Data Sources: Florida Senate Redistricting, Various County Elections and GIS Departments, Florida Secretary of State.