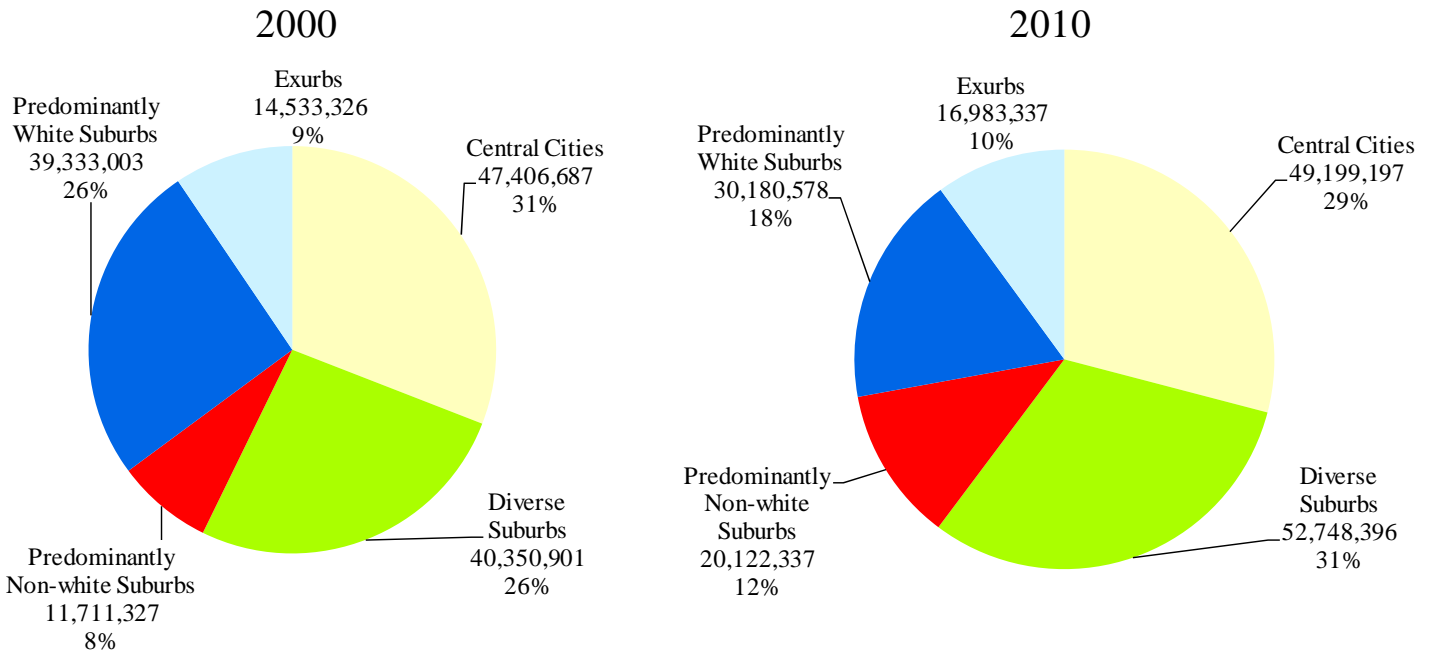


America's Racially Diverse Suburbs: Opportunities and Challenges

50 Largest U.S. Metropolitan Areas

Community types in the 50 largest metropolitan areas



Characteristics of the Community Types in the 50 largest metropolitan areas

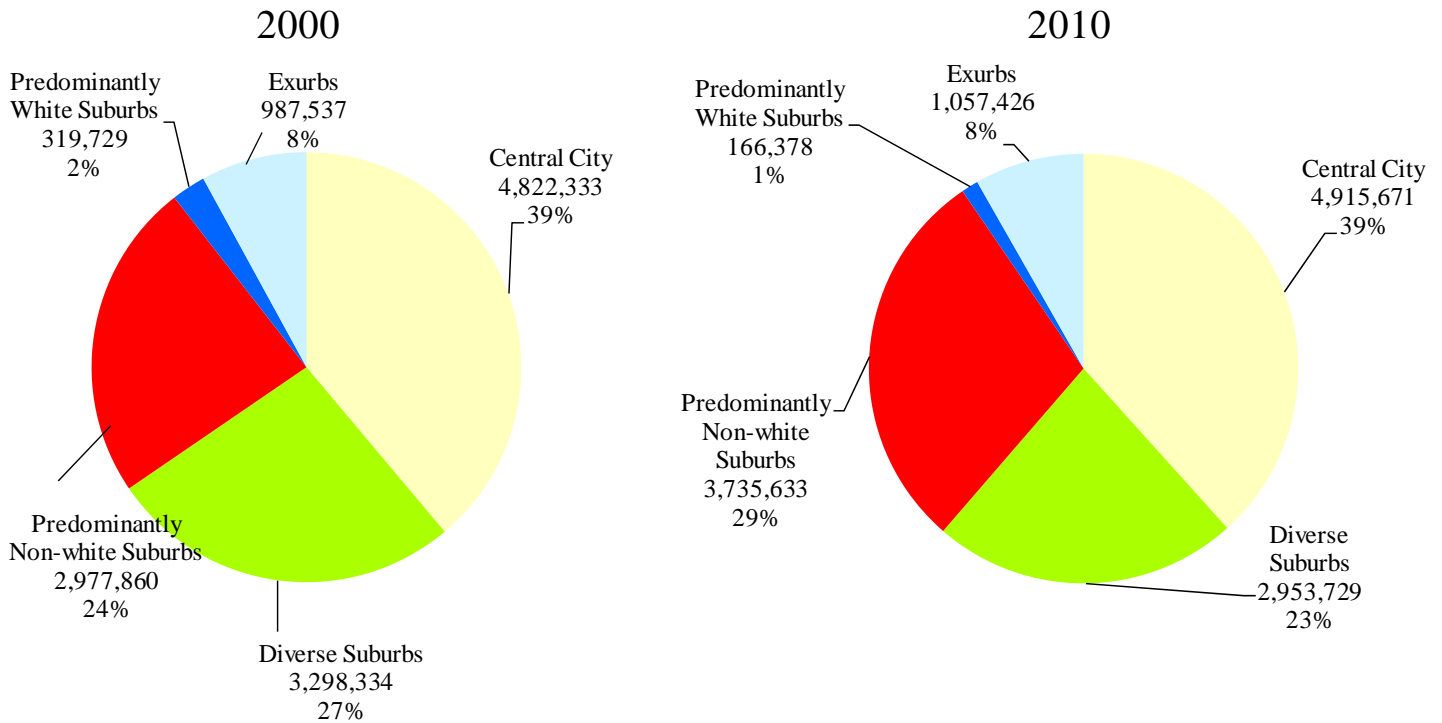


Data Sources: Population, income and poverty—Census Bureau; Jobs—Local Employer-Household Dynamics Program; Tax base—various state and local government sources.

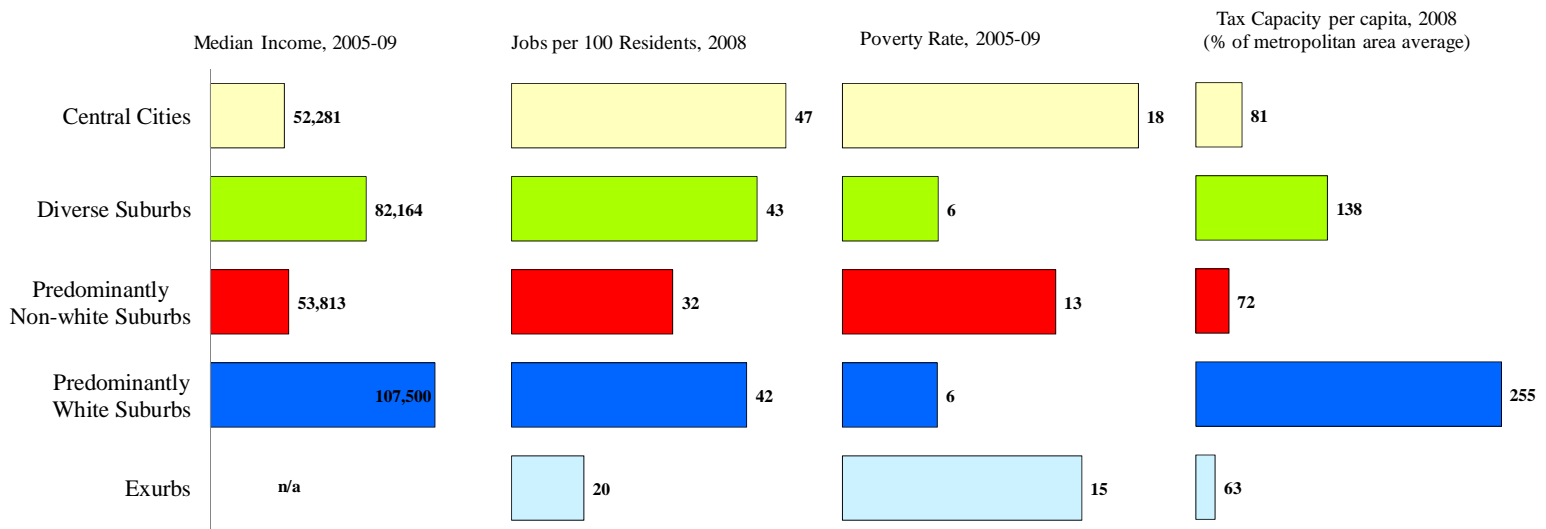
America's Racially Diverse Suburbs: Opportunities and Challenges

Los Angeles Metropolitan Area

Community Types in Los Angeles



Characteristics of the Community Types in Los Angeles



Data Sources: Population, income and poverty—Census Bureau; Jobs—Local Employer-Household Dynamics Program; Tax base—various state and local government sources.

Los Angeles Metropolitan Area: Fact Sheet

Breakdown of Community Type

	2010 <u>Population</u>	Share of Metro <u>Population</u>	Share of Suburban <u>Population</u>
Diverse	2,953,729	23	37
Predominantly non-white	3,735,633	29	47
Predominantly white	166,378	1	2
Exurb	1,057,426	8	13
Central City	4,915,671	38	

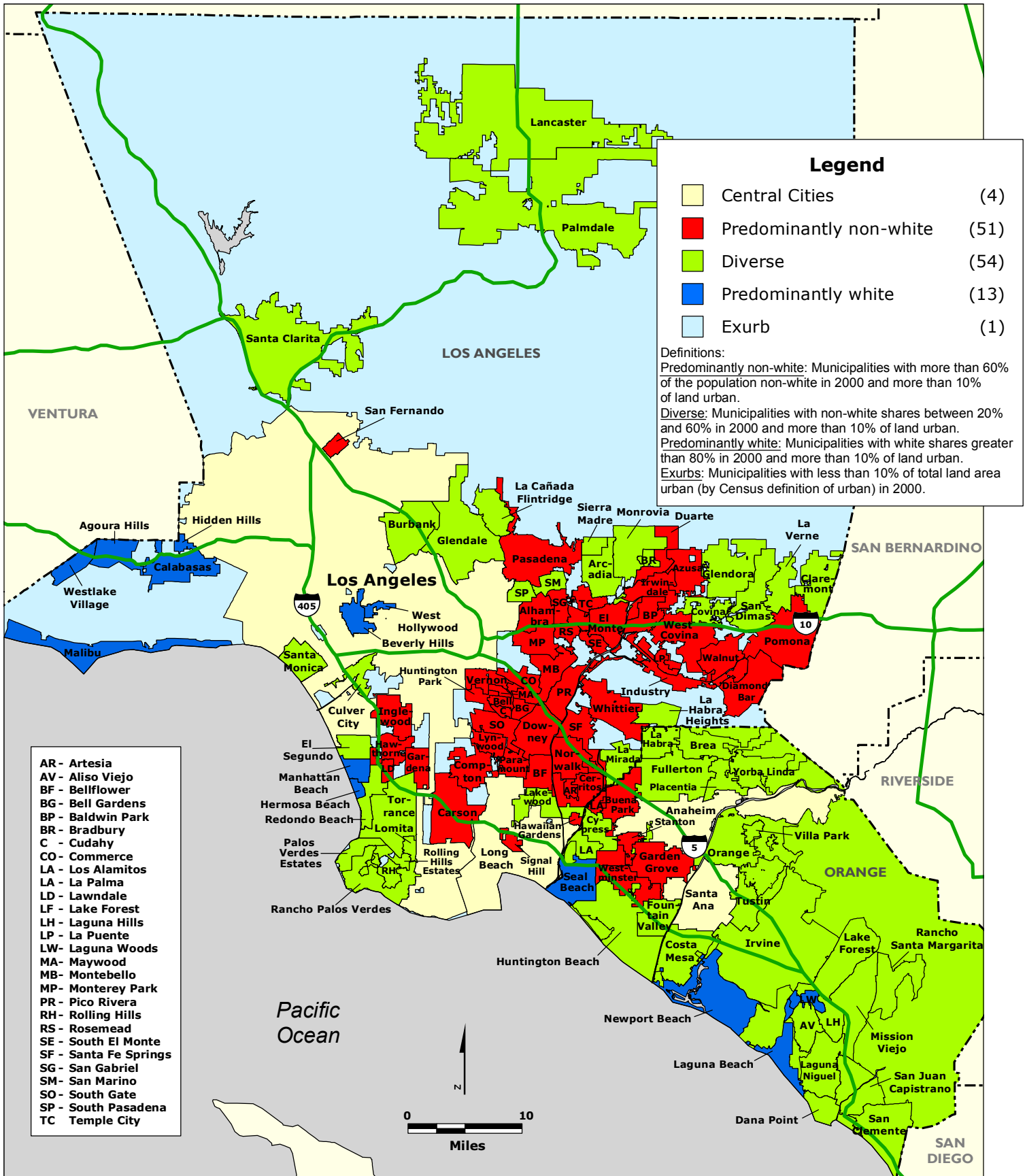
Examples of Large Diverse Suburbs

	2000 <u>Population</u>	2010 <u>Population</u>	2010 % of Population <u>Non-white</u>
Irvine city	143,072	212,375	55
Glendale city	194,973	191,719	38
Huntington Beach city	189,594	189,992	33
Santa Clarita city	151,088	176,320	44
Torrance city	137,946	145,438	58
Orange city	128,821	136,416	53
Costa Mesa city	108,724	109,960	48
Burbank city	100,316	103,340	42
Mission Viejo city	93,102	93,305	31
Santa Monica city	84,084	89,736	30
Lakewood city	79,345	80,048	59

Examples of Suburbs in Rapid Transition

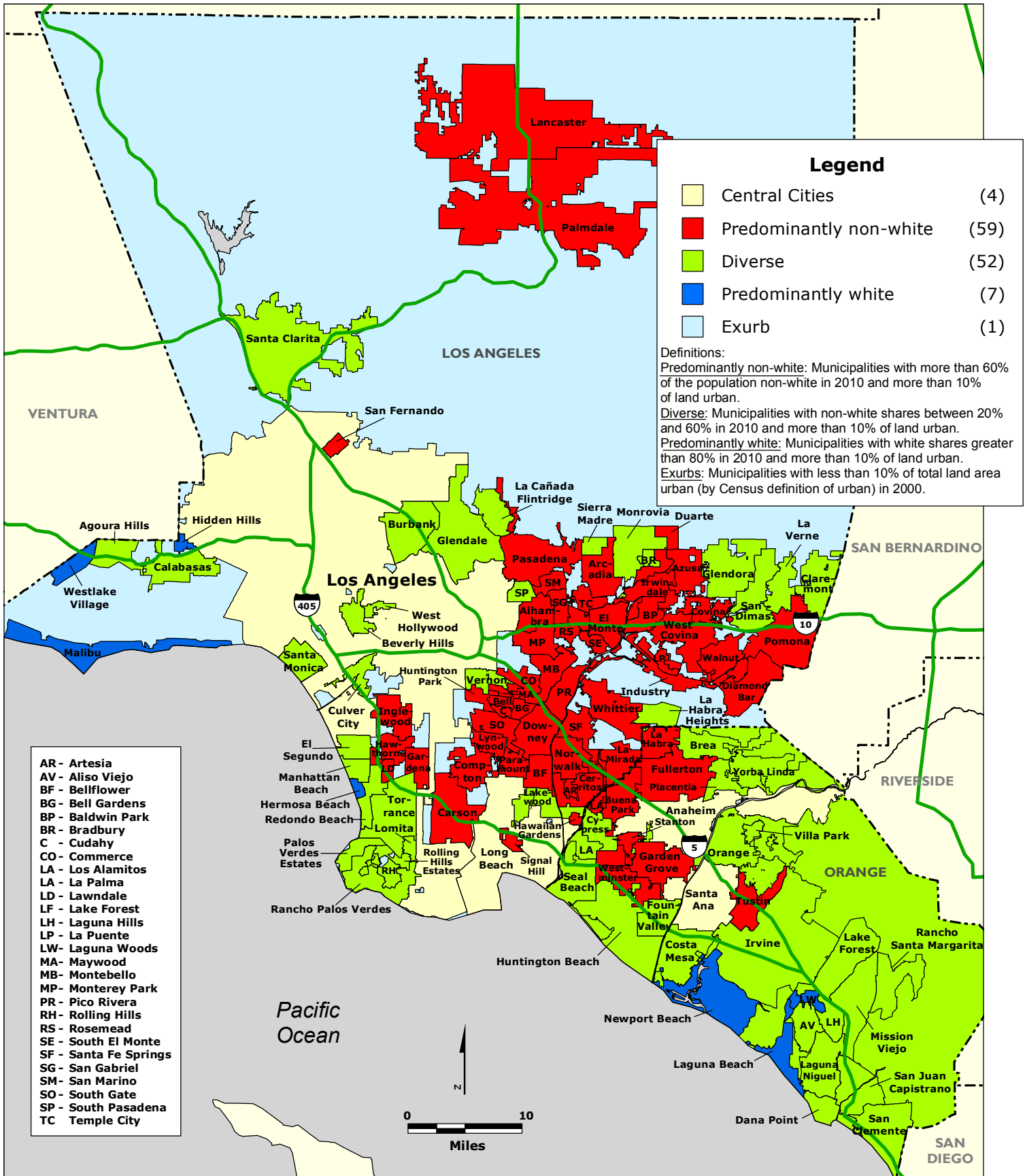
	2000 % of Population <u>Non-white</u>	2010 % of Population <u>Non-white</u>	% Point <u>Change</u>
Lancaster city	48	66	18
Palmdale city	59	76	17
Temple City city	62	77	15
Arcadia city	60	74	14
Bradbury city	37	51	14
Brea city	34	47	13
Cypress city	43	56	13
Santa Clarita city	31	44	13
Covina city	58	70	12
Irvine city	43	55	12

LOS ANGELES REGION: Community Type by Municipality and County Unincorporated Area, 2000



Data Source: U.S. Census Bureau.

LOS ANGELES REGION: Community Type by Municipality and County Unincorporated Area, 2010



Data Source: U.S. Census Bureau.