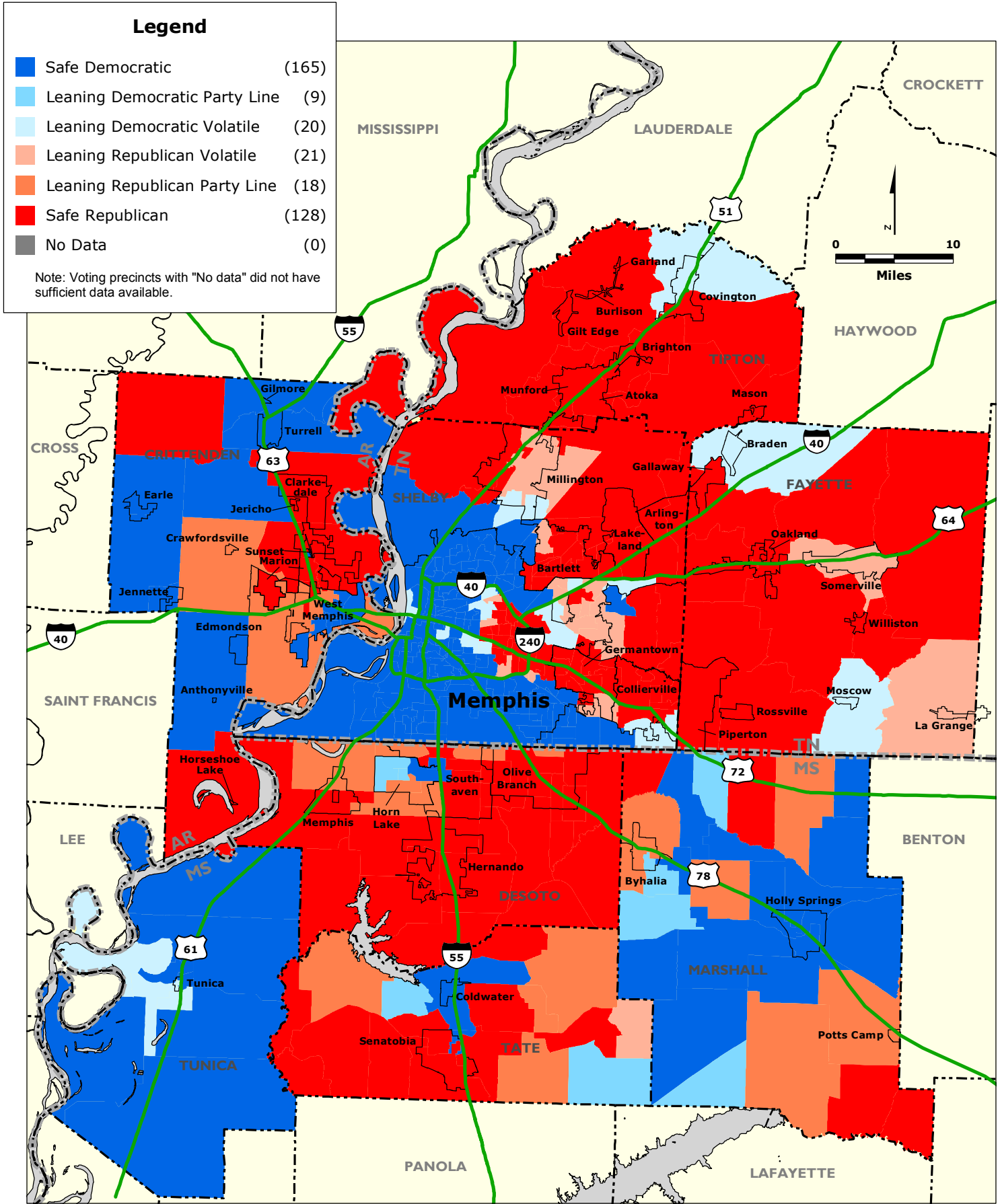


MEMPHIS REGION: Party Preferences by Voting Precincts based on Election Results for the year 2012



Legend

Safe Democratic	(165)
Leaning Democratic Party Line	(9)
Leaning Democratic Volatile	(20)
Leaning Republican Volatile	(21)
Leaning Republican Party Line	(18)
Safe Republican	(128)
No Data	(0)

Note: Voting precincts with "No data" did not have sufficient data available.

Data Source: Tennessee Department of State, Division of Elections, Tennessee Comptroller of the Treasury, Office of Local Government, Mississippi Statewide Election Management System, Arkansas Secretary of State, various county agencies.