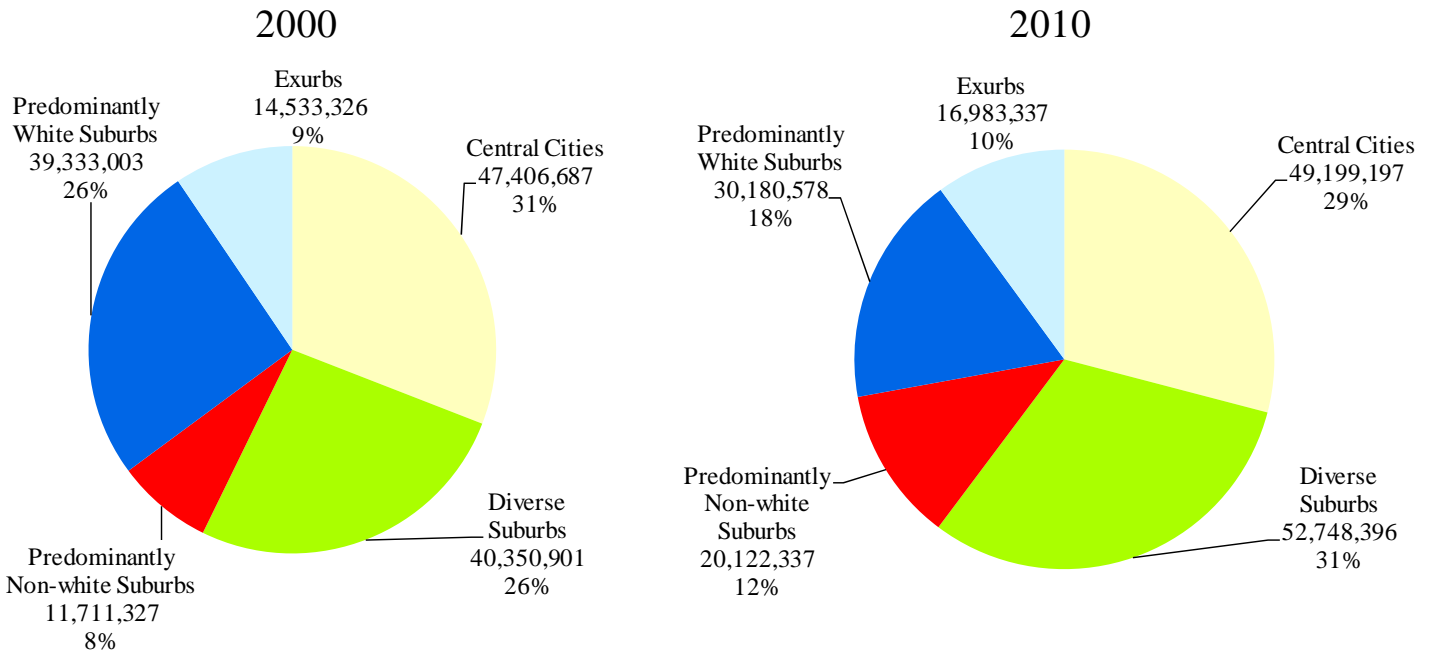


# America's Racially Diverse Suburbs: Opportunities and Challenges

## 50 Largest U.S. Metropolitan Areas

### Community types in the 50 largest metropolitan areas



### Characteristics of the Community Types in the 50 largest metropolitan areas

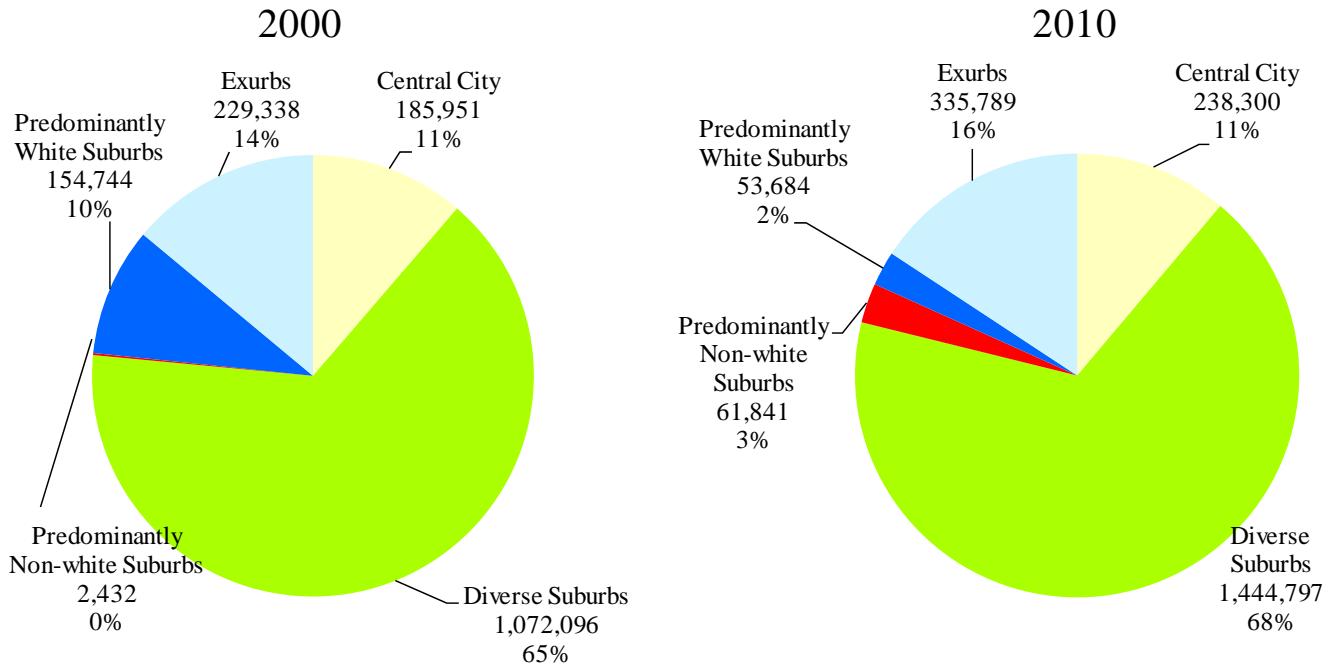


Data Sources: Population, income and poverty—Census Bureau; Jobs—Local Employer-Household Dynamics Program; Tax base—various state and local government sources.

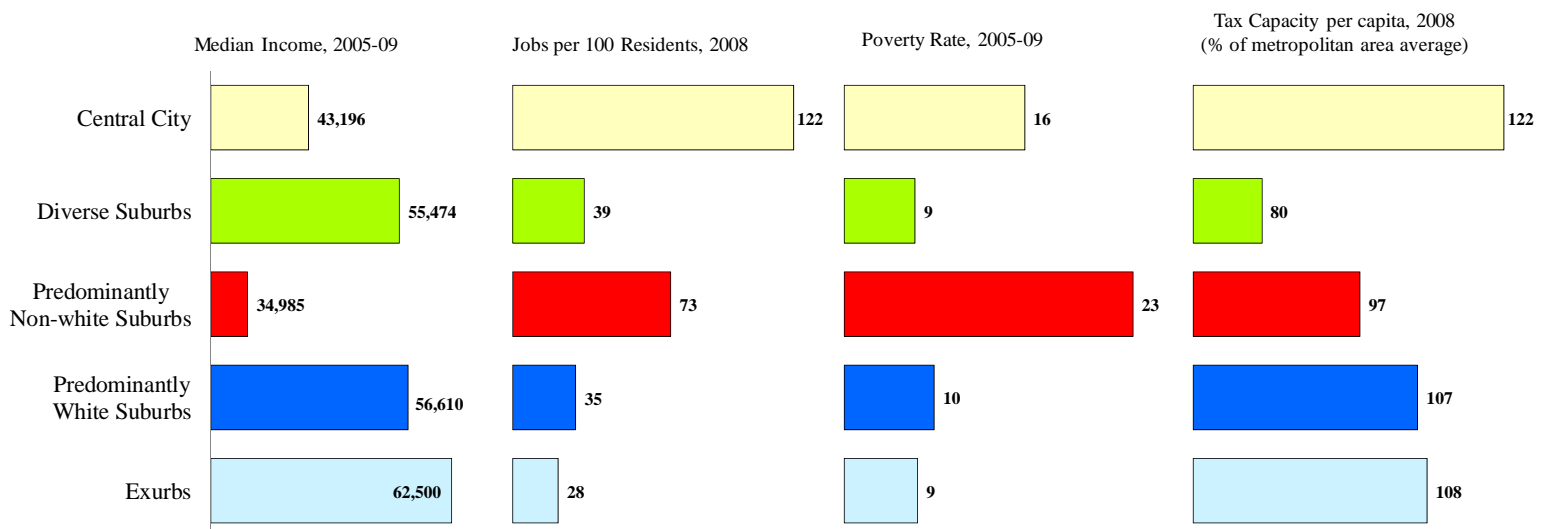
# America's Racially Diverse Suburbs: Opportunities and Challenges

## Orlando Metropolitan Area

### Community Types in Orlando



### Characteristics of the Community Types in Orlando



Data Sources: Population, income and poverty—Census Bureau; Jobs—Local Employer-Household Dynamics Program; Tax base—various state and local government sources.

# Orlando Metropolitan Area: Fact Sheet

## Breakdown of Community Type

	2010 <u>Population</u>	Share of Metro <u>Population</u>	Share of Suburban <u>Population</u>
Diverse	1,444,797	68	76
Predominantly non-white	61,841	3	3
Predominantly white	53,684	3	3
Exurb	335,789	16	18
Central City	238,300	11	

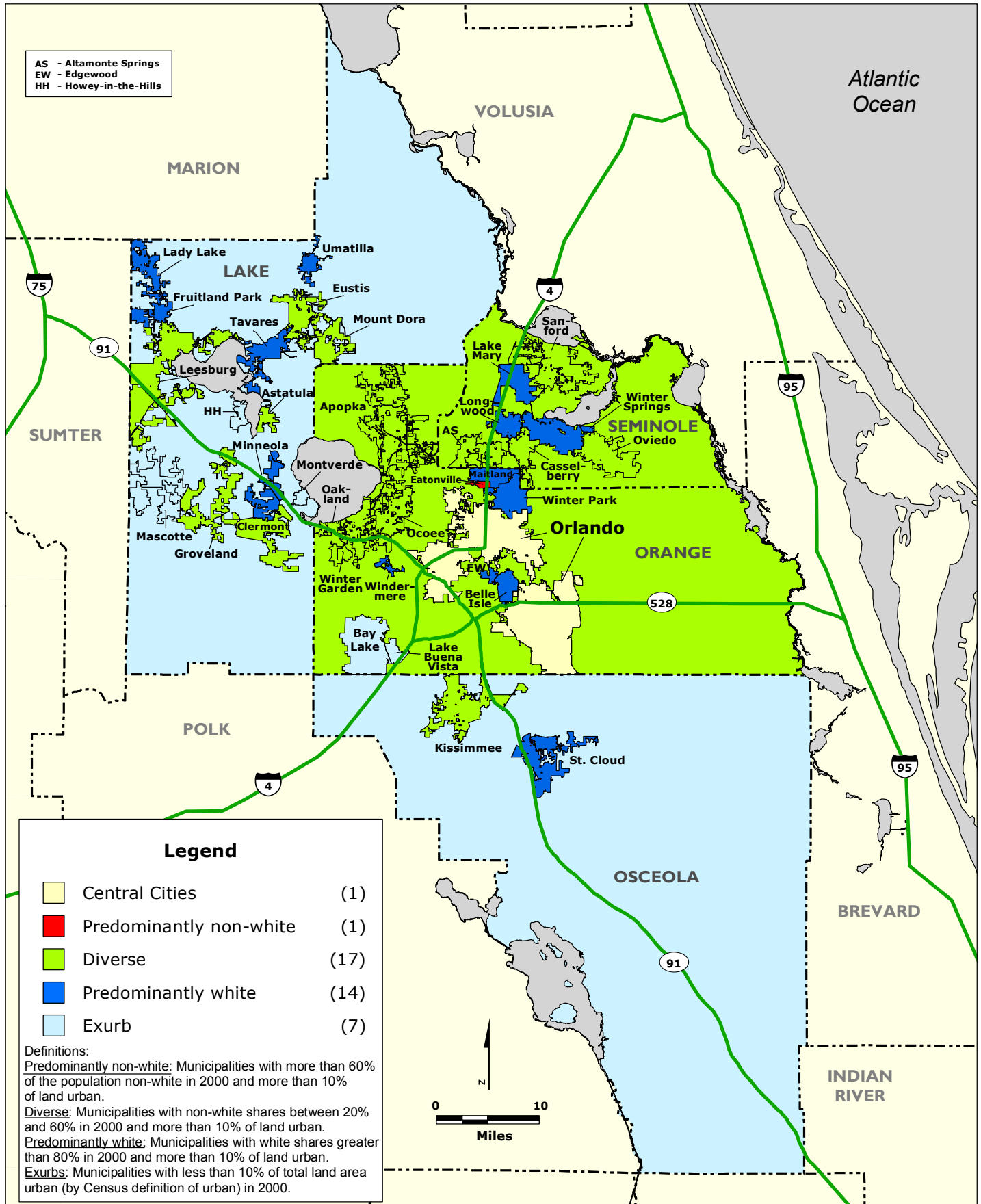
## Examples of Large Diverse Suburbs

	2000 <u>Population</u>	2010 <u>Population</u>	2010 % of Population <u>Non-white</u>
Sanford	38,291	53,570	55
Apopka	26,642	41,542	51
Altamonte Springs	41,200	41,496	43
Ocoee	24,391	35,579	46
St. Cloud	20,074	35,183	38
Winter Garden	14,351	34,568	46
Oviedo	26,316	33,342	30
Winter Springs	31,666	33,282	25
Clermont	9,333	28,742	40
Casselberry	22,629	26,241	35

## Examples of Suburbs in Rapid Transition

	2000 % of Population <u>Non-white</u>	2010 % of Population <u>Non-white</u>	% Point <u>Change</u>
Clermont	20	40	20
St. Cloud	18	38	20
Minneola	18	37	19
Ocoee	27	46	19
Kissimmee	56	74	18
Apopka	37	51	14
Edgewood	16	30	14
Winter Garden	33	46	13
Altamonte Springs	31	43	12

# ORLANDO REGION: Community Type by Municipality and County Unincorporated Area, 2000



# ORLANDO REGION: Community Type by Municipality and County Unincorporated Area, 2010

