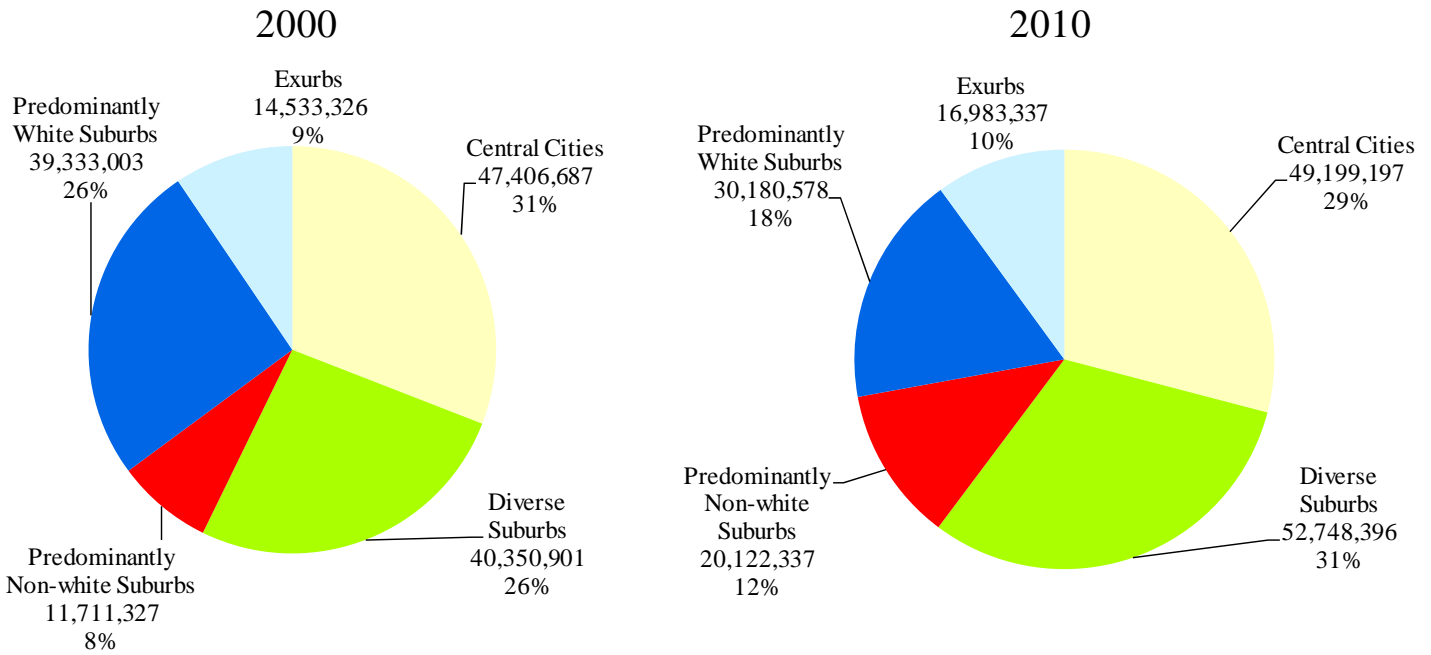


America's Racially Diverse Suburbs: Opportunities and Challenges

50 Largest U.S. Metropolitan Areas

Community types in the 50 largest metropolitan areas



Characteristics of the Community Types in the 50 largest metropolitan areas

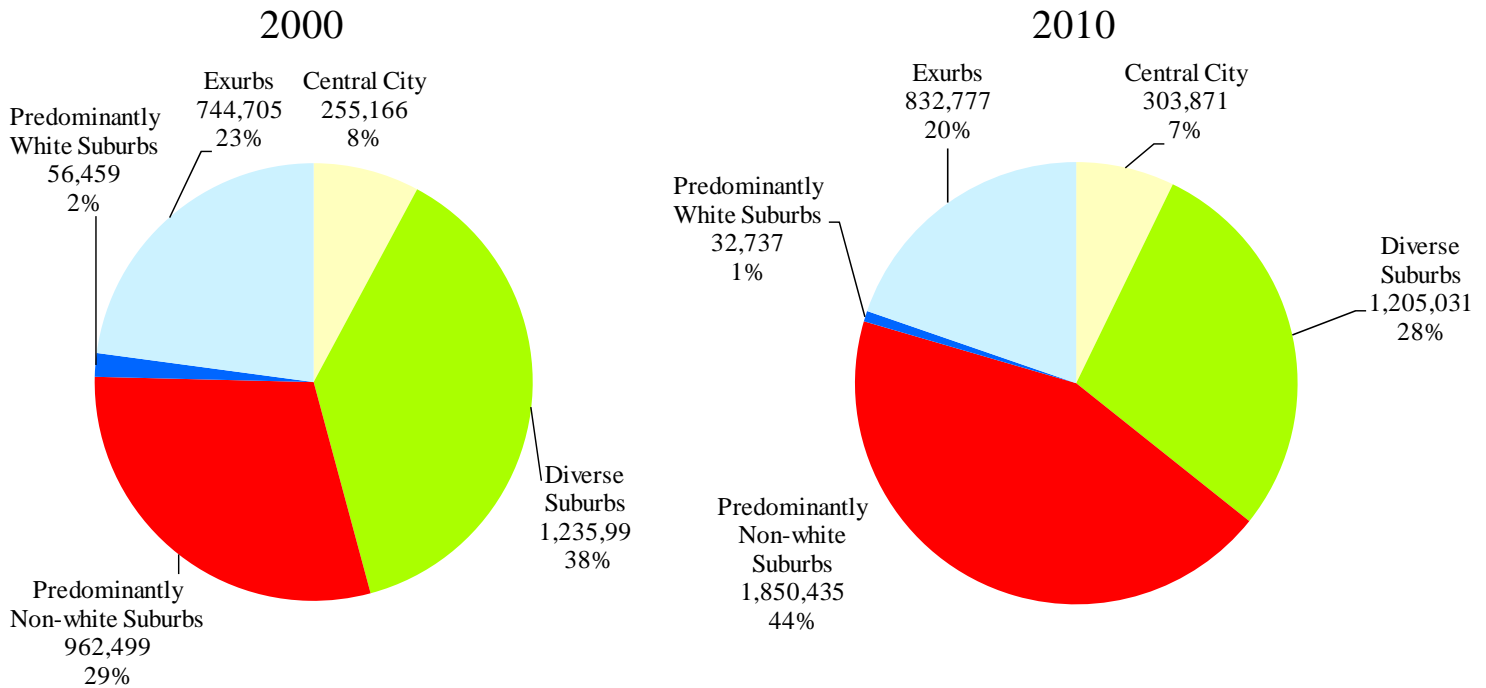


Data Sources: Population, income and poverty—Census Bureau; Jobs—Local Employer-Household Dynamics Program; Tax base—various state and local government sources.

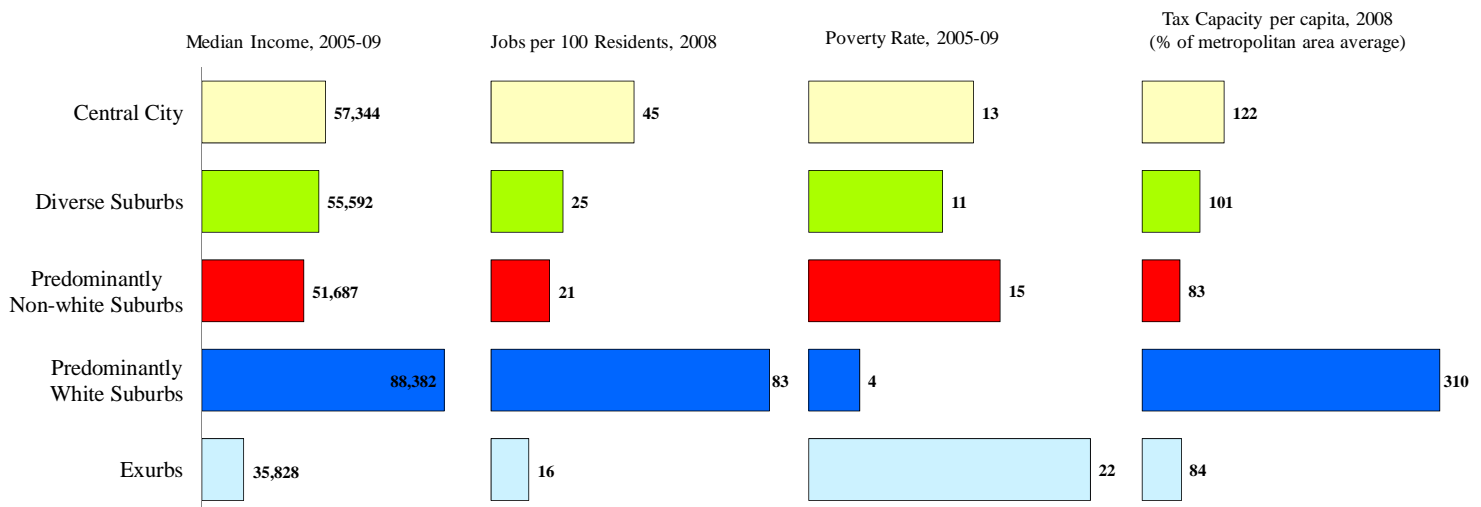
America's Racially Diverse Suburbs: Opportunities and Challenges

Riverside Metropolitan Area

Community Types in Riverside



Characteristics of the Community Types in Riverside



Data Sources: Population, income and poverty—Census Bureau; Jobs—Local Employer-Household Dynamics Program; Tax base—various state and local government sources.

Riverside Metropolitan Area: Fact Sheet

Breakdown of Community Type

	2010 <u>Population</u>	Share of Metro <u>Population</u>	Share of Suburban <u>Population</u>
Diverse	1,205,031	29	31
Predominantly non-white	1,850,435	44	47
Predominantly white	32,737	1	1
Exurb	832,777	20	21
Central City	303,871	7	

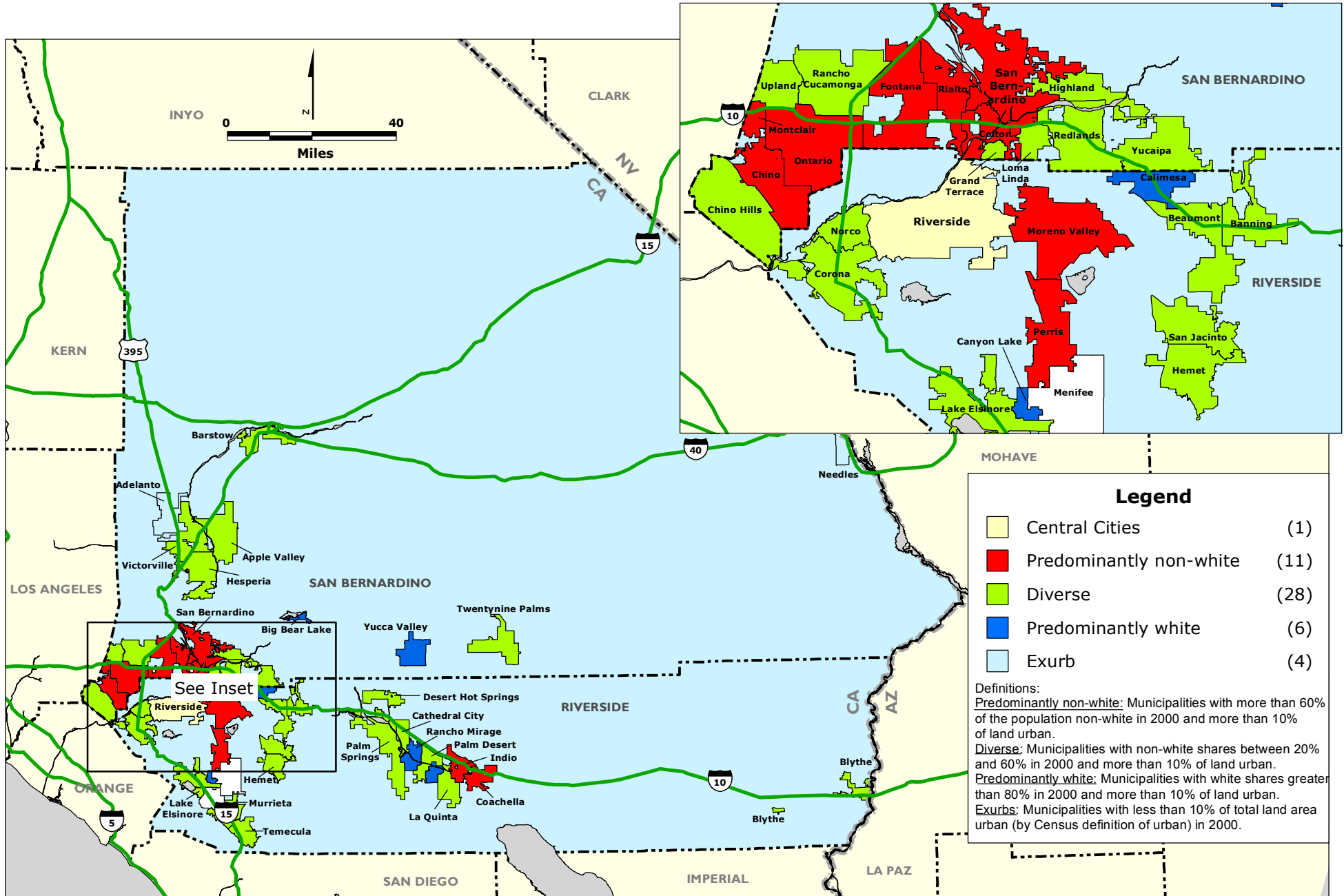
Examples of Large Diverse Suburbs

	2000 <u>Population</u>	2010 <u>Population</u>	2010 % of Population <u>Non-white</u>
Rancho Cucamonga city	127,743	165,269	57
Murrieta city	44,282	103,466	44
Temecula city	57,716	100,097	43
Hesperia city	62,582	90,173	59
Hemet city	58,812	78,657	48
Upland city	68,393	73,732	56
Apple Valley town	54,239	69,135	44
Redlands city	63,591	68,747	46
Yucaipa city	41,207	51,367	34
Palm Desert city	41,155	48,445	30
Palm Springs city	42,807	44,552	36

Examples of Suburbs in Rapid Transition

	2000 % of Population <u>Non-white</u>	2010 % of Population <u>Non-white</u>	% Point <u>Change</u>
Hesperia city	38	59	21
Victorville city	53	72	19
San Jacinto city	47	65	18
Hemet city	30	48	18
Murrieta city	28	44	16
Grand Terrace city	39	54	15
Blythe city	58	72	14
Desert Hot Springs city	52	66	14
Lake Elsinore city	49	62	13
Moreno Valley city	68	81	13

RIVERSIDE - SAN BERNARDINO REGION: Community Type by Municipality and County Unincorporated Area, 2000



RIVERSIDE - SAN BERNARDINO REGION: Community Type by Municipality and County Unincorporated Area, 2010

