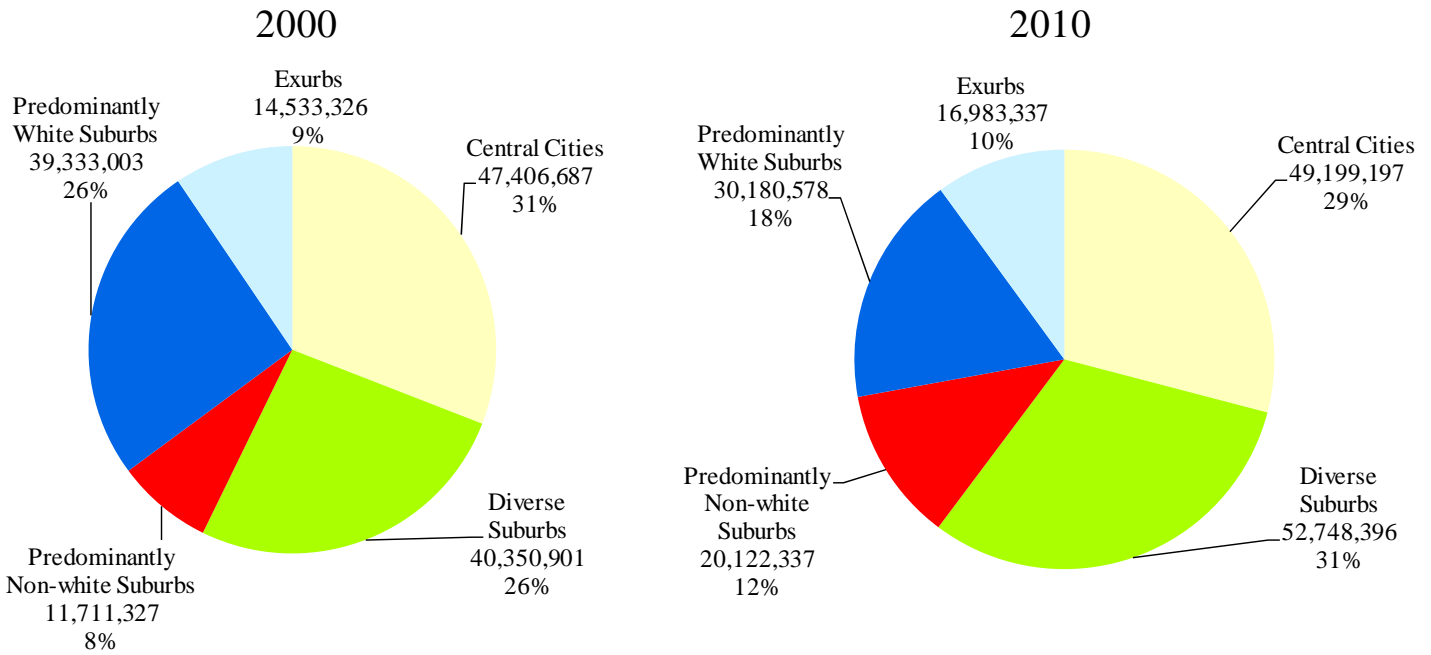


America's Racially Diverse Suburbs: Opportunities and Challenges

50 Largest U.S. Metropolitan Areas

Community types in the 50 largest metropolitan areas



Characteristics of the Community Types in the 50 largest metropolitan areas

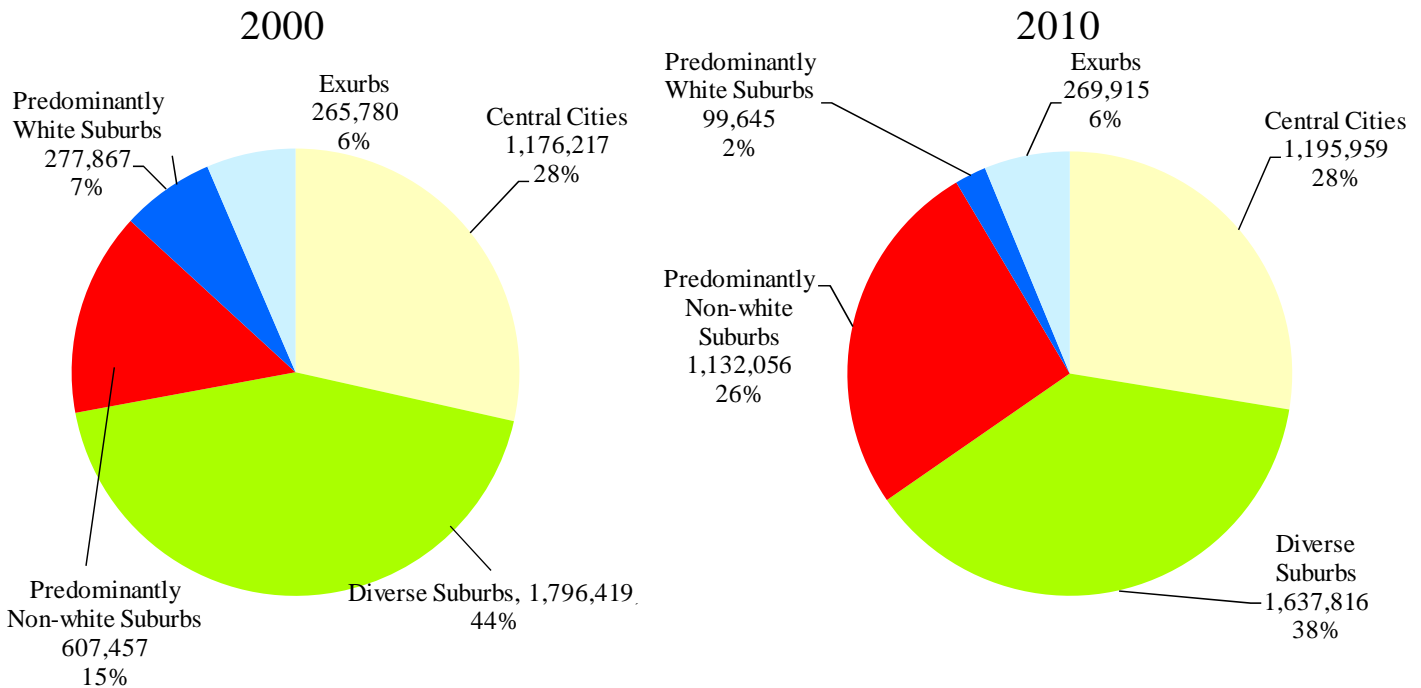


Data Sources: Population, income and poverty—Census Bureau; Jobs—Local Employer-Household Dynamics Program; Tax base—various state and local government sources.

America's Racially Diverse Suburbs: Opportunities and Challenges

San Francisco Metropolitan Area

Community Types in San Francisco



Characteristics of the Community Types in San Francisco



Data Sources: Population, income and poverty—Census Bureau; Jobs—Local Employer-Household Dynamics Program; Tax base—various state and local government sources.

San Francisco Metropolitan Area: Fact Sheet

Breakdown of Community Type

	2010 <u>Population</u>	Share of Metro <u>Population</u>	Share of Suburban <u>Population</u>
Diverse	1,637,816	38	52
Predominantly non-white	1,132,056	26	36
Predominantly white	99,645	2	3
Exurb	269,915	6	9
Central City	1,195,959	28	

Examples of Large Diverse Suburbs

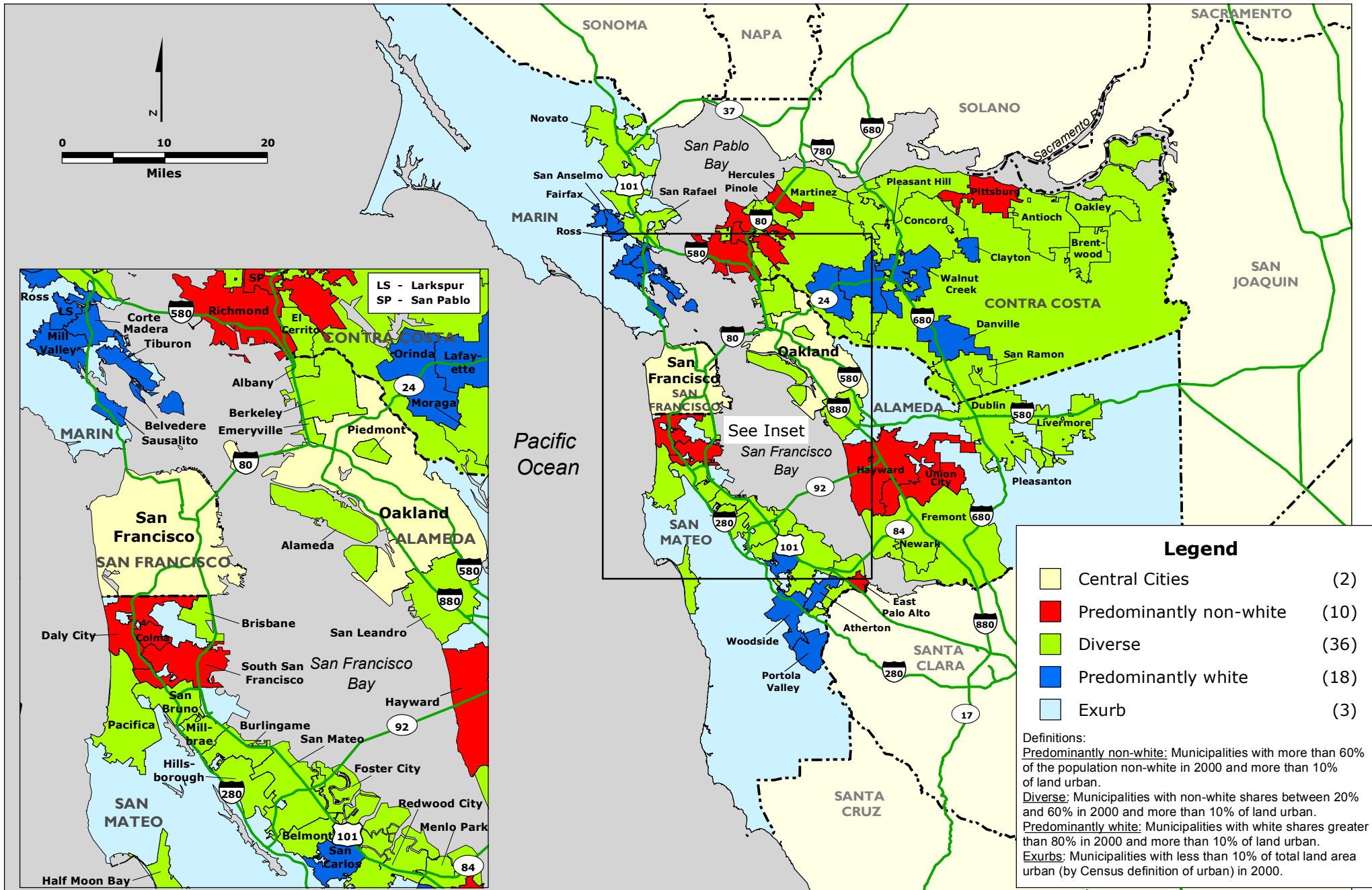
	2000 <u>Population</u>	2010 <u>Population</u>	2010 % of Population <u>Non-white</u>
Concord city	121,780	122,067	50
Berkeley city	102,743	112,580	45
San Mateo city	92,482	97,207	53
Livermore city	73,345	80,968	35
Redwood City city	75,402	76,815	56
Alameda city	72,259	73,812	55
San Ramon city	44,722	72,148	52
Pleasanton city	63,654	70,285	39
Walnut Creek city	64,296	64,173	26

Examples of Suburbs in Rapid Transition

	2000 % of Population <u>Non-white</u>	2010 % of Population <u>Non-white</u>	% Point <u>Change</u>
San Ramon city	28	52	24
Antioch city	44	64	20
Dublin city	38	56	18
Oakley city	36	53	17
San Leandro city	58	73	15
Millbrae city	44	59	15
Pleasanton city	24	39	15
Fremont city	59	73	14
Brisbane city	35	49	14
Foster City city	44	58	14

SAN FRANCISCO REGION

Community Type by Municipality and County Unincorporated Area, 2000



SAN FRANCISCO REGION

Community Type by Municipality and County Unincorporated Area, 2010

